

at home

a-list awards!

⊕ GET THE GOODS
MERLOT,
BOLD BACKS
& BROWN is the
new BLACK

**INSIDE:
HOUSE
PARTIES**

**JUDGES:
GET TO KNOW
THE PANEL**

**CHEERS!
CRANBERRY
FRENCH 75**

**FASHION HOUSE:
RICH JEWEL
TONES**

\$5.95
NOV/DEC 2017
ATHOMEFC.COM



athome magazine presents the Eighth Annual
A-List Awards 2017

written by JUDY OSTROW, MARY KATE HOGAN
AND JAMIE MARSHALL

edited by MALIA MCKINNON FRAME, LAUREN FETTERMAN,
JILL JOHNSON AND NATHAN TAVARES

Come on in...

And take a peek inside sixty-three stunning homes in Fairfield County and beyond. Step into gorgeous, light-filled foyers, tour luxurious, one-of-a-kind living spaces and spend time in lush, contemplative gardens. Whether you're looking for inspiration or hunting for a design pro to work with on your next project, we're sure you'll find something here that speaks to you. So settle in and check out the 2017 A-List winners and finalists. And if you're a professional who is coveting a win in 2018, it's never too soon to start thinking—the call for entries will be here soon!



winner **Bath Design:** Transitional/Modern





INTERIOR DESIGN
Iris Michaels
Karen Berkemeyer Home
Westport, 203-454-0032
karenberkemeyerhome.com

Spencer Cox Interiors
New Canaan, 917-312-3105
spencercoxinteriors.com

BUILDER
Leo Alves



Michaels captures the quiet elegance of an island spa with the simple geometric forms of oak cabinetry, white tile and stone. **opposite:** Cox added decorative details such as the distinctive chandelier and vintage gold-framed mirror.

KAREN BERKEMEYER HOME

organic mix

When Katie Cox enlisted Iris Michaels of Karen Berkemeyer Home to reinvent her master bath as a spa-like oasis, the homeowner envisioned Hawaii, a place where members of her family live, and an environment that she loves for its organic beauty and tranquility. Taking a cue from her client's inspiration, Michaels designed the room's fundamentals, carefully choosing elements to give the space a clean, modern look that is softened with a subtle palette; its materials suggest the colors and textures in nature.

For walls and floors, Michaels specified dolomite marble, a white stone with subtle veining in gray and gold. "It's a very quiet stone," says the designer, "and that choice informed my selection of other surfaces." White porcelain thassos tile in the shower, a glasslike quartz surface for vanity and sink tops, and mother of pearl mosaic tiles that cover the vanity wall add a reflective quality to the space's light, warming glow. The rectangular forms of the sink and vanity, fabricated in rough sawn oak, conform to an overall aesthetic of thoughtful simplicity.

Cox, who partners in Spencer Cox Interiors with her mother, collaborated with Michaels on the project, adding evocative decorative elements to finish the space. Lighting fixtures—a banana bark chandelier is a key component in the space—and such accessories as shells, corals and moisture-loving plants provide the atmospheric details that complete her original concept. —JO

PHOTOGRAPHY: JANE BEILES



HILDERBRAND INTERIORS

personal balance

In the living room of this 1906 New Canaan country house, designer Lisa Hilderbrand blends antiques with contemporary pieces, bringing in understated color and decorative touches that are meaningful to the homeowners. A grandfather clock lives near a skirted table topped with Lucite lamps; a bold contemporary painting hangs above a sofa with classical lines next to a custom glass-topped coffee table and opposite a pair of wing chairs. This well-orchestrated mix results in a sophisticated, livable room with conversation zones in an open layout suited for day-to-day family life and entertaining. “We wanted to be able to do both: to have a large crowd seated together, or have smaller groups in

more intimate seating,” says Hilderbrand. The bay by the windows is a favorite spot for family members to sit and have coffee, read a book, browse on an iPad or play games at the round table.

The couple, who are art collectors, discovered the Vidvuds Zviedris painting at Art Basel that became a focal point for the room. Some of the antiques, including the large chandelier and the giltwood mirror, were sourced in New Orleans, where one of their older kids attends college. Throughout the room, “we kept fabrics a little more casual in texture,” says Hilderbrand. “The mountain grass carpet helps to unify the large room and takes the edge off what could be a more formal space.” —MKH

PHOTOGRAPHY: JANE BEILES



INTERIOR DESIGN
 Hilderbrand Interiors
 New Canaan
 203-722-9642
 hilderbrandinteriors.com

this spread: Black antique lamps with silk box-pleat shades top faux-shagreen end tables on either side of the sofa. Hung above a skirted table covered in a Jim Thompson linen with cotton bullion fringe, a French nineteenth-century giltwood mirror is carved with hunting trophies, a detail that appealed to the husband, who is a hunter. Swivel chairs upholstered in vintage Pierre Frey and Travers-covered stools complete the flexible seating options.

athome magazine **A-List Awards 2017**

winner **Kids' Playspace**

INTERIOR DESIGN
Denise Davies
D2 Interieurs
Weston, 646-326-7048
d2interieurs.com





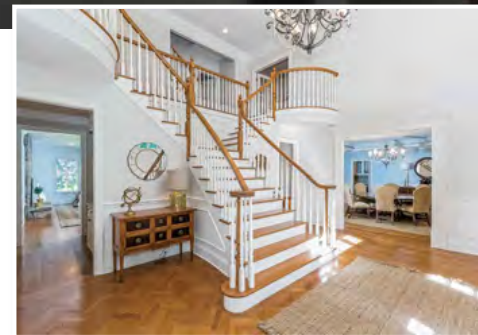
D2 INTERIEURS

happy days

In this modern playroom for two young boys, designer Denise Davies turned a sloped ceiling with odd angles into an artistic element, painting it Benjamin Moore's Brilliant Blue and creating a geometric zig-zag pattern. The bold, bright space serves as a multifunctional room where the kids have sleepovers, play chess, climb the ladder to the loft or just sit in the window seat and read. D2's approach to the design is playful with touches like the graphic 1-4-3 art (teen texting code for "I love you"), the emoji ball light and colorful pillows and poofs, yet it's also practical—if the kids spill on the patterned Flor rug and it gets stained, it's easy to swap in a new carpet tile. As the kids grow, the bunk bed hangout space could be traded for a couch and chairs to convert the room into a teen lounge or game room, so they can enjoy it at every age. When designing a space for kids, Davies says, "my advice is to go for it. Your kids are only young once. They should have a space that they can go bananas in. Don't hold back. It goes very quickly. Enjoy your kids and have fun with it. How could you not be happy when you walk in this space?" —MKH

"I always try to mix old and new," says Davies, of the vintage flag hanging above the bunks, vibrant throw pillows and pop art stickers by Keith Haring. Cubby shelving from Ikea keeps the kids' toys organized in baskets from Land of Nod. The wall-art initials are from PB Teen. **opposite:** A Crate & Barrel game table anchors the room and is topped with a Jonathan Adler chess set and surrounded by chairs from Design Within Reach.



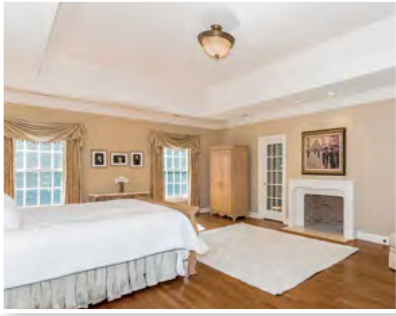


MORGAN HARRISON HOME

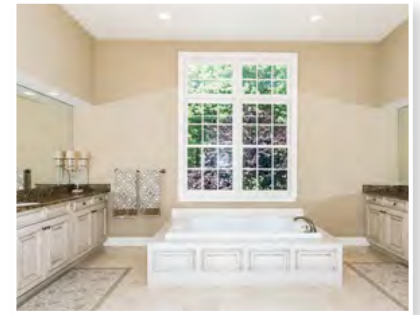
shape shifter

The homeowners bought this classic New England Colonial with renovation in mind. Though they loved the home's location, the size and the scale, they wanted to update it and give it a modern feel. "They relocated from San Francisco, where they had a contemporary house overlooking Golden Gate Bridge," designer Michelle Morgan Harrison says. Happily, the house was in good shape and there were few structural changes involved; most of the work was cosmetic. "It was built well and had good bones," she says. "It was just tired. Everything was travertine, curlicues and antique glazed paints." The biggest challenge? The new owners closed in May and needed the house to be move-in ready by the end of summer. First up: "The Juliet balconies and swoopy staircase had to go," Harrison says. She created a rectangular stair-

case and double-height foyer, added floor-to-ceiling double stick Shaker paneling and introduced a white-and-black color palette for a clean, modern feel. The effect was immediate. "Getting into that staircase and going that extra step really changed how the house felt," she says. "Once we pinned down the design, everything else followed suit." Other notable changes included replacing the recessed front door with double eight-foot mahogany doors, adding a suspended awning to create a more modern-style portico, replacing dated fireplace surrounds, painting the library's mahogany paneling a high-gloss blue and updating the clients' existing furnishings with new fabrics and treatments. "This is a great example of what is possible to do with an existing home," says Harrison. "Once it was done, it changed the house a hundredfold." —JM



this spread: In the entry, Harrison reconfigured the existing staircase and gave it a more modern, geometric look. Much of the work in the rest of the house was cosmetic—changing casings, trim and heavy crown moldings, updating fireplace surrounds, adding Caesarstone countertops and a double-sided waterfall island to the kitchen. “Even the master bath layout is the same,” she says. She also repurposed furnishings as much as possible.



INTERIOR DESIGN
Morgan Harrison Home
New Canaan, 203-594-7875
morganharrisonhome.com

**BUILDER AND
CUSTOM CABINET MAKER**
Mike Procyk
A.Pro Builders
Monroe, 203-459-0166
aprobuiders.com

LANDSCAPE DESIGN
Pieper Associates
Woodbury, 203-263-5577

PAINTER
Leo's Painting
203-952-1796

STONE
The Stone Workshop
Bridgeport, 203-362-1144
stoneworkshops.com

TILE
Tile America
Stamford, 203-323-5922
tileamerica.com

winner Entryway

INTERIOR DESIGN
Roughan Interiors
New York City/Weston
203-769-1150
roughaninteriors.com

CONTRACTOR
Silva Brothers, Inc.
Port Chester, NY
914-439-4670



ROUGHAN INTERIORS

artful entry

When it came time to update the entryway of a stone Georgian in Greenwich, Chris Roughan conceived a dramatic design that more clearly reflected a young couple's evolving aesthetic. "When they bought the house twelve years ago, they had it done in a traditional style," she says. "They wanted something beautiful but elegant and a bit hip." The space, which is defined by an immense staircase and a curved wall, had a limited seating area. "Entryways are difficult," she explains. "There is only so much you can do." First step: paint the ivory wall paneling and trim—even the stair rails—a Benjamin Moore Super White semi-gloss and add a statement-making glass-and-nickel ceiling fixture from Vaughan. A pair of Jacobean chests are a nod to the past, while polished nickel Woodville lamps and decorative mirrors add a modern touch. A custom sofa fits snugly beneath the staircase and is covered in Schumacher velvet and topped with a custom Hermès pillow. A wall of highly curated art leads to the second-floor landing, which was also in need of a significant overhaul. "Prior to this, it was all wall-to-wall carpeting. There was no lighting at all. It felt very closed off and dark," Roughan says. To brighten the space, she introduced wall sconces, a custom console with a smoked glass front, a modern stainless-steel bench with Holly Hunt leather, and embroidered drapes whose slight pattern provides interest without being overwhelming. The biggest challenge for the designer was placing the art properly on the curved wall. "It's important to make sure nothing sticks out too much," she says. "It worked out beautifully. That wall represents the youthfulness and sophistication of my clients." —JM

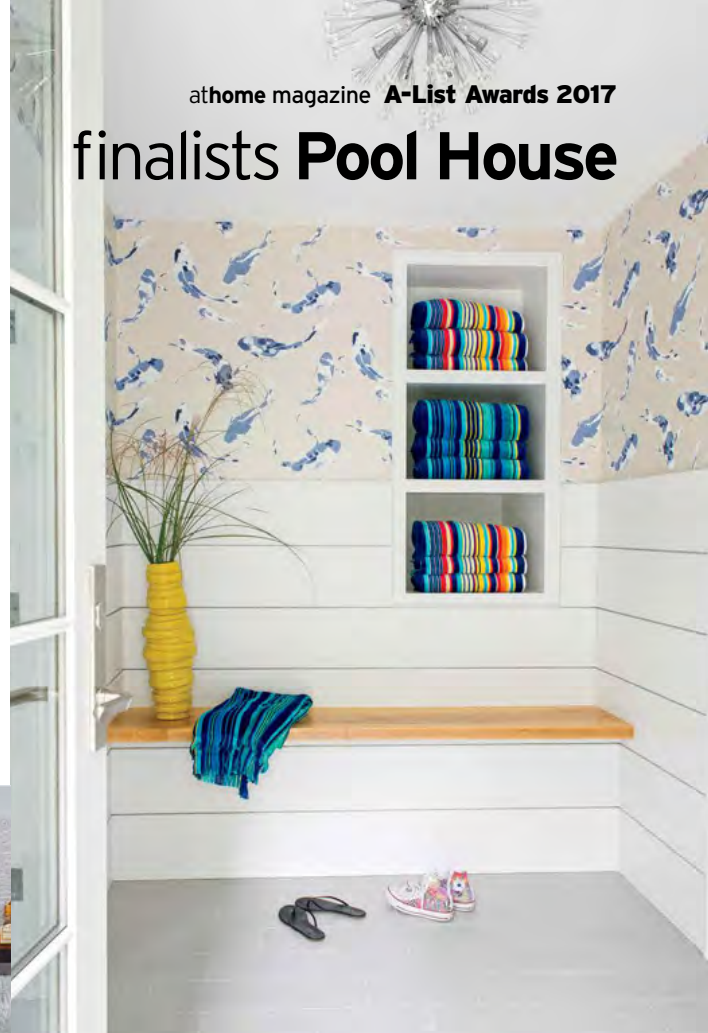
PHOTOGRAPHY: JANE BELES



this spread:
The art wall features a mix of work including photographs by Arthur Elgort, Deann Arce and Lili O'Malley and oil paintings by Westport artist Carole McClintock. A Phillip Jeffries grasscloth brightens the upstairs landing, as do the embroidered panels by Zimmer + Rohde through Zoffany and polished nickel hardware by Houliès.

finalists **Pool House**

PHOTOGRAPHY: JANE BEILES

**INTERIOR DESIGN**

Sage & Ginger
New Canaan
203-594-9862
sageandginger.com

ARCHITECT

Teo Siguenza Architect
Bedford, NY, 914-234-6289
teosiguenza.com

BUILDER

Matos Andrade
Andrade Construction
Danbury, 203-302-8477

Sage & Ginger

Tasked with designing a comfortable, inviting pool house in a long, linear space, Sage & Ginger created an airy, open concept with delineated spaces in a modern, fun vibe. To maximize flow and functionality, one room leads into the next. The entertaining space and sitting area are open to each other on one end. A small wine room, tucked away in the sitting area, is steps from the sleek seventeen-foot bar. Off the entertaining space on the other side are a gym, a changing room with convenient outdoor access, and a bathroom. Since the property is set on a hill, the pool house is a level below the main house with an internal staircase connection. This unique positioning allowed for a deck spanning the entire pool house rooftop. Featuring a stainless-steel railing system and covered gazebo, it serves as a fabulous entertaining area with a staircase for easy access. —JJ

finalists **Pool House**



BUILDER
Richard Rosano
RRBuilders
New Canaan
203-972-6100
rrbuilders.com

ARCHITECT
Scott Soper
Soper Babcock
Associates
Greenwich
203-661-9463
soperbabcock.com

PHOTOGRAPHY: JANE BELLES

RRBuilders with Soper Babcock Associates

To satisfy their clients' desire for a year-round pool house with a rectilinear pool and spa, RRBuilders collaborated with Soper Babcock Associates to create a three-volume structure featuring a spacious common area with a bar and lounge, flanked by a bathroom/changing room and a bicycle storage room. An "old moss" stone veneer wall and fireplace sit opposite the lift-and-slide entrance doors, and a full basement offers ample space for patio furniture and pool equipment. The exterior matches the main house's slate roof, trim detail and Flemish bond brick veneer and quoin work, while custom mahogany clapboard siding gives the pool house a less formal aesthetic. A covered terrace with a raised seam copper roof and square Tuscan columns projects toward the pool. The simulated post-and-beam roof structure, fabricated in walnut with bleached knotty yellow pine planking on the ceiling, is a favorite feature. —JJ



finalists **Dining Room**



INTERIOR DESIGN
Dalia Canora Design
Darien, 203-505-4404
daliacanoradesign.com

WORKROOM
Monika Krompaska
Monika's Sewing
Norwalk, 203-767-7755



Dalia Canora Design

With the invitations already in the mail, Dalia Canora was given carte blanche by her clients to design their large dining room in time to host nearly 100 guests. While respecting the original architecture of the 1929 Colonial home with Federal-style influences, Canora infused the room with a modern, ethereal vibe. She used the main area for dining, adding a round table, stunning faux leather chairs with brass legs by Interlude Home and a modern, playful buffet. The room's extension was set up as a more casual seating area, perfect for lingering before or after dinner. A palette of blush and pale gray blends with a subdued geometric Thibaut wallpaper, and mirrors set in paneled walls create a glamorous backdrop for antique crystal sconces and a mesmerizing crystal chandelier. The party was a great success, and this elegant space now represents what entertaining exemplified in an era long ago. —MF

PHOTOGRAPHY: JANE BELLES

finalists **Kids' Bedroom**

D2 Interieurs

Housed in a modern, classic Nantucket Shingle-style home, this fun, youthful bedroom by D2 Interieurs is designed to carry a young boy through his teens and into college. Playful bedding from Land of Nod, soft carpeting from Stark and window treatments in a Quadrille fabric inject the space with pattern, while a Serena & Lily bench, vintage mushroom accessory and custom upholstered window seat in a Knoll fabric entice you to sit and stay. Artwork, including the llama picture over the bed and an original Linda Colletta piece above the desk, are vibrant points of interest. With such sophisticated bones, the room can easily be refreshed by switching out bedding and accessories when it's time for a change. It's a space designed to grow into for many years to come. —*LF*

INTERIOR DESIGN
Denise Davies
D2 Interieurs
Weston
646-326-7048
d2interieurs.com



PHOTOGRAPHY: JANE BEILES

finalists **Entryway**



Hilderbrand Interiors

Although this entry hall doesn't have grand features like a winding staircase or two-story ceiling, a beautiful symmetrical layout with oval windows and glass doors doesn't need much embellishment. To ensure the space could stand up to the adjoining living and dining rooms, Lisa Hilderbrand infused it with a simple elegance and unexpected finishes. Her additions include a high gloss that brightens and reflects the doors and windows as well as paneled moldings inset with a lizard vinyl wallcovering that gives subtle texture and sheen. A large contemporary painting offers just enough color to the monochromatic palette, and a lantern with a verdigris finish reveals a pretty patina. Furnishings like the Regency rosewood center table and a pair of velvet-covered sculptural chairs are a few of the many graceful touches that define this sophisticated segue into the rest of this elegant home. —MF

PHOTOGRAPHY: JANE BEILES



INTERIOR DESIGN
Hilderbrand Interiors
New Canaan
203-722-9642
hilderbrandinteriors.com

finalists **Bedroom**

INTERIOR DESIGN
Roughan Interiors
New York City/Weston
203-769-1150
roughaninteriors.com

UPHOLSTERY
NY Custom Furnishings
Long Island City, NY
718-392-0214
nycustomfurnishings.com



PHOTOGRAPHY: JANE EBILES



Roughan Interiors

The interiors of this pre-war New York City apartment were designed as a pied-à-terre where friends and family could stay comfortably. Chris Roughan's clients wanted their guests to feel welcome, and this bedroom had to be functional while also tailored and inviting. Roughan used textured wallcovering, serene paint colors and neutral bedding to brighten what had been a small, dark space. The soft palette, with its touches of silver, pale gray and hints of peacock blue and brown, evokes a calm sanctuary and blends well with pieces like the Dransfield & Ross pheasant mirror, a pair of Circa alabaster lamps and the queen bed with a Naugahyde headboard. The custom reading nook, featuring David Weeks sconces and Bermuda Hemp wallcovering, is the favorite spot, even for the family dog. It's a bright and airy haven that feels like home. —MF