

NYC & G

New York Cottages and Gardens

COTTAGESGARDENS.COM | APRIL 2017

SIMPLY CHIC

**BROOKLYN
CHELSEA
FIFTH AVENUE
IRVINGTON
SOUTH BRONX
UPPER
EAST SIDE**



The House *on the Hill*

After an online search, a city family navigates its way to a new home in Westchester County

BY STEPHEN TREFFINGER | PHOTOGRAPHS BY JANE BEILES

AS SEEN IN
NYC&G
New York Cottages and Gardens

Good Bones
Denise Davies of D2 Interiors took on the decoration of this circa-1850s family home in Irvington. See *Resources*.



Made To Match
The living room is furnished with D2 Interieurs–designed sofas upholstered in a Carlucci di Chivasso velvet, armchairs covered in Schumacher’s Darya Ikat in Jewel, and stone cocktail tables from Century Furniture. The Currey & Company chandelier is finished in antique gold leaf; the sconces are from RH. See Resources.

Kathryn O’Neal-Dunham and her husband, Gib Dunham, were dedicated New Yorkers, and their two young sons, aged seven and 10, born-and-raised city kids. But a month in the country, as it were, changed all that. Looking for green space and some respite from a sticky urban summer, they rented a house in Westport, Connecticut, for a trial run in August 2014. At the end of their idyll, the kids burst into tears and asked, “Why do we have to go back?”

A long search for a new home ensued, with the Dunhams eventually having their “Goldilocks moment” after touring a house on about two-and-a-half acres in Irvington, one of the “coastal towns” on the Hudson 25 miles north of Manhattan. Dating from the 1850s, the home was once the residence of John F. Havemeyer, a member of the family that founded what would eventually become Domino Sugar. (You can carbon-date the neighboring houses, mostly modern structures from the 1960s and ’70s, that were built on land parcels sold off over time from the formerly larger estate.) Our front lies an old root cellar, where the Dunhams’ sons like to play, and which the family hopes to restore one day.



AS SEEN IN
NYC&G
 New York Cottages and Gardens

“I sometimes joke that when you ask people in Irvington where they come from, they all say Park Slope”



Color Whirl
 In the dining room (ABOVE), custom chairs covered in Zak + Fox's Obi surround a bronze and walnut dining table. The accent wall is covered in Phillip Jeffries's Manila Hemp in Petal. The sunroom (NEAR LEFT) includes a sofa and pendant light from Lillian August. (OPPOSITE) The Eames chairs and Saarinen table in the breakfast nook are from Design Within Reach; the roman shade fabric is Hable Construction's Poppy Clover. See Resources.



Davies calls the kitchen chandeliers “the absolute stars of the house”

“I sometimes joke that when you ask people in Irvington where they come from, they all say Park Slope,” says O’Neal-Dunham, referencing a *New York Times* article that named a nearby town the latest “Hipsturbia,” making the region sound like Williamsburg on the Hudson. In reality, Irvington is a mix of working families who commute to the city and creative types—furniture designers, painters, writers, movie producers. There is also the advantage, she adds, of small school systems and an easygoing vibe, although “it’s not Brooklyn in the sense that there aren’t adorable boutiques everywhere. And I still can’t get decent Chinese takeout.”

O’Neal-Dunham, who is the COO for a Manhattan-based

nonprofit, discovered her interior decorator, Denise Davies, the founder and COO of D2 Interieurs, after an online search. She was looking for a designer who would understand her needs and work very quickly, since she and her husband, a portfolio manager for an investment firm, closed on the house last May and wanted to be in before school started in September.

Davies was up for the challenge. “Our specialty is designing for young families, giving them homes that they can really live in,” says the decorator, who was also game for the breakneck pace, as were the architect and contractor. It definitely took a village to pull this one off, and it didn’t hurt that O’Neal-Dunham promised



Bold Strokes
Kelly green chandeliers from Shine by S.H.O punctuate the kitchen (OPPOSITE), which includes Gabby stools topped with a Josef Frank fabric. (THIS PAGE) The laundry room’s custom cabinetry is painted Benjamin Moore’s Leisure Green and the walls are lined in Given Campbell’s Fountain. The faucet is from Rejuvenation. See Resources.



The bulk of the interiors are a celebration of full-throttle color, “the most in any house I’ve done”



Palette Pleasers
 In the master bedroom (OPPOSITE), a tufted bench upholstered in Osborne & Little’s Kilmory sits at the base of the bed frame, which is covered in a graphic Kelly Wearstler print. The bedside lamps are from Aerin and the chandelier is from Made Goods. The sofa in the adjacent sitting room (THIS PAGE TOP) is upholstered in a Quadrille linen; the Lucite table is from Plexi-Craft. The guest room (NEAR LEFT) features a Serena & Lily wall covering and bed frame; the striped throw pillows are from Anthropologie. See Resources.



she wouldn’t be an indecisive client. “If Denise showed me a light fixture or a chair, I’d say yes,” recounts O’Neal-Dunham, who also okayed the oversize, boxy green kitchen chandeliers, although Davies had been apprehensive about them, since they were larger than she had anticipated. Now, the designer says triumphantly, they are “the absolute stars of the house.”

The only time O’Neal-Dunham hesitated: settling on handles for the kitchen cabinets. It took months for her to choose, with the family making do with loops of tape in the meantime. “I was hav-

ing a crisis,” O’Neal-Dunham confesses, laughing about the ironic final pick: standard-issue pulls from RH.

Ordinary cabinet decor aside, the bulk of the interiors are a celebration of full-throttle color, “the most in any house I’ve done,” Davies says. “We even might have gone a little overboard!” But the majority of rooms are anchored in a neutral palette, with layers of color worked in, and black typically plays a strong role throughout. “I try to put black in every room because it’s grounding and makes everything more modern. A little goes a long way.”



“Our specialty is designing for young families, giving them homes that they can really live in”



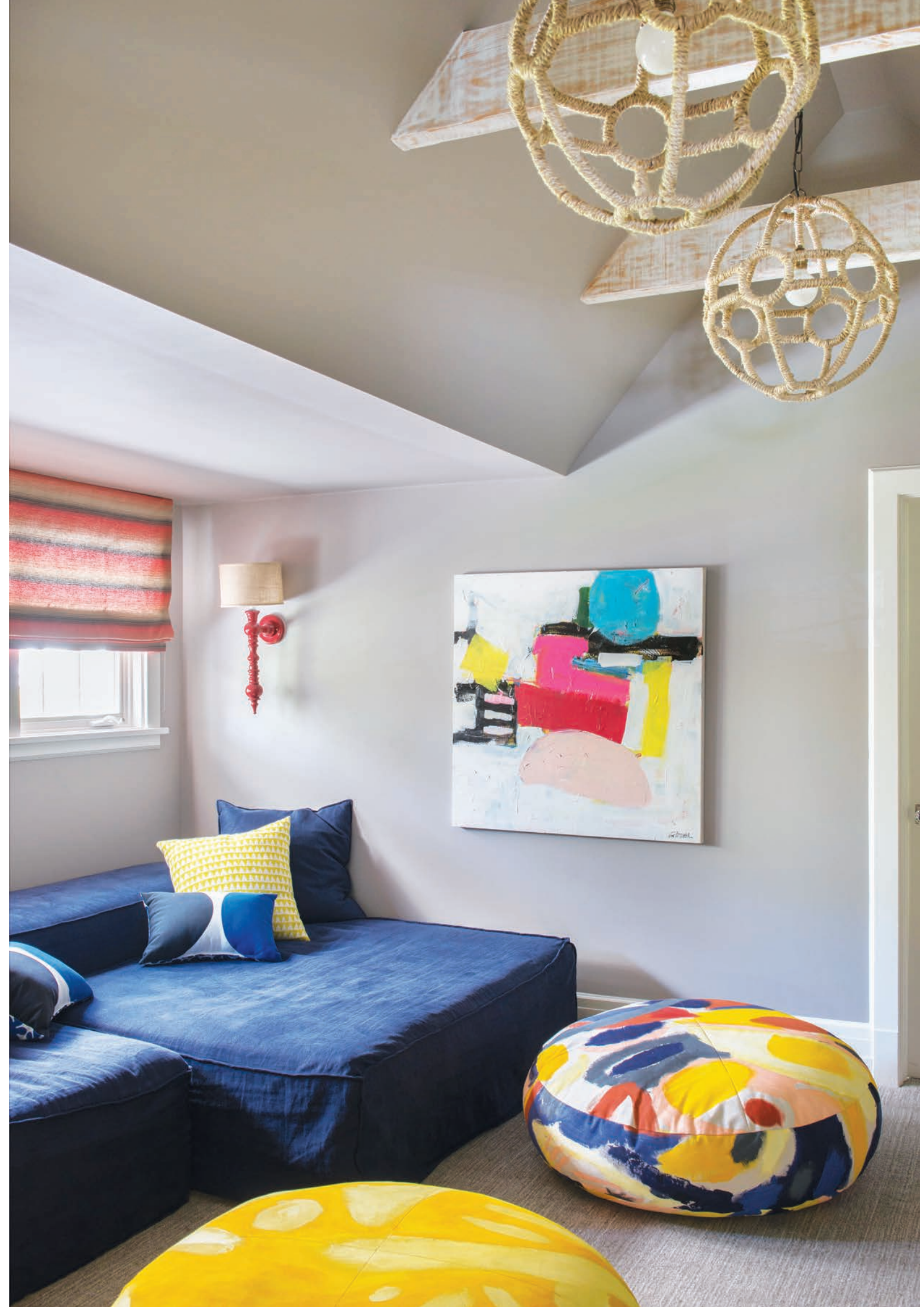
Soak It All In

(THIS SPREAD) The master bath's Empire Rosette vanity from RH is painted Ralph Lauren Home's Club Navy; the pulls are from ModShop. The faucets, sconces, and tub filler are from Rejuvenation. The walls are covered in marble tile and Quadrille's Bali Isle in Camel II. See Resources.



“Decorating rooms can be a very fine line. You have to have a degree of restraint”

The furnishings are the result of a similar interplay between temperance and indulgence. In the breakfast nook, for example, a Saarinen Tulip table echoes the floral pattern of the blinds. (“Both have that ‘70s vibe,” Davies says.) The kitchen stools are covered in a vibrant Josef Frank fabric that Davies had laminated. (“A lot of ‘indoor-outdoor’ fabrics tend to be very dull in color and don’t clean as well as their manufacturers claim.”) In the master bath, an overscale-pattern wallpaper contrasts beautifully with a smaller motif on the window treatments. “Decorating rooms can be a very fine line,” Davies reflects. “You have to have a degree of restraint, or you risk a total backfire. The theme of this house was to keep the charm of a traditional farmhouse, but infuse it with modern sensibilities so that it would have that perfectly imperfect look.”



Kid Stuff
In the boys’ bedroom (OPPOSITE TOP), Lillian August lamps sit atop steamer-trunk nightstands from RH. The area rug is from Stark Carpet and the throw pillows are from Urban Outfitters. Tiles from Klaffs cover the walls and floor in the boys’ bathroom (OPPOSITE BOTTOM), which includes a roman shade made with a Studio Bon fabric. The children’s lounge area (THIS PAGE) features hand-painted poufs, a Dunes and Duchess sconce, and a custom sofa upholstered in a Romo cotton/linen blend. See Resources.